

Asure ID[®] 7



Card Personalization Software



Intuitive, fast and efficient.

It's hard to believe this is ID card software.



The one program for all printers

Asure ID® 7 works with card printers from many different manufacturers. Just by switching to Asure ID 7, you can upgrade to a much easier, efficient and effective ID card production system and extend the investment in your current hardware.



Powerful tools in a friendly package

Asure ID 7 changes the paradigm of how ID card personalization software looks, feels and performs. An intuitive user interface and simplified processes make ID card template design and data entry extremely easy. Behind the friendly interface, Asure ID 7 is a productivity powerhouse with tools and capabilities to support the most sophisticated ID card applications. Whether you're new to ID badging or a power user, Asure ID 7 helps you design and produce ID cards and other secure credentials with unprecedented ease and efficiency.

Productivity has never looked better

The Asure ID 7 user interface is based on the latest version of Microsoft® Office or Windows® ribbon, including tab-driven navigation with convenient tools and fly-out control palettes.

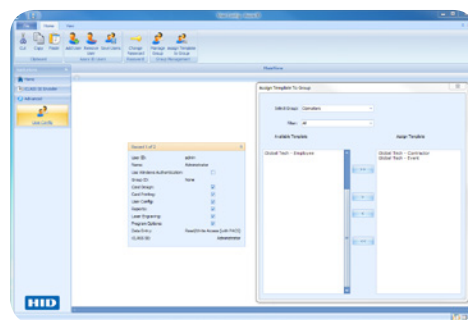
The Asure ID 7 user interface provides a dramatic speed boost to designing cards and entering cardholder data. Everything you need to design and populate a card is right in front of you, and routine tasks - such as capturing or loading a photo, or adding a digitized signature - can be performed with a couple of mouse clicks. You can also auto-enhance a records photo during the photo acquisition process. A data entry center with configurable on-screen layouts lets users set up an efficient data entry sequence independent of how the

data appears on a card, or is structured in a database.

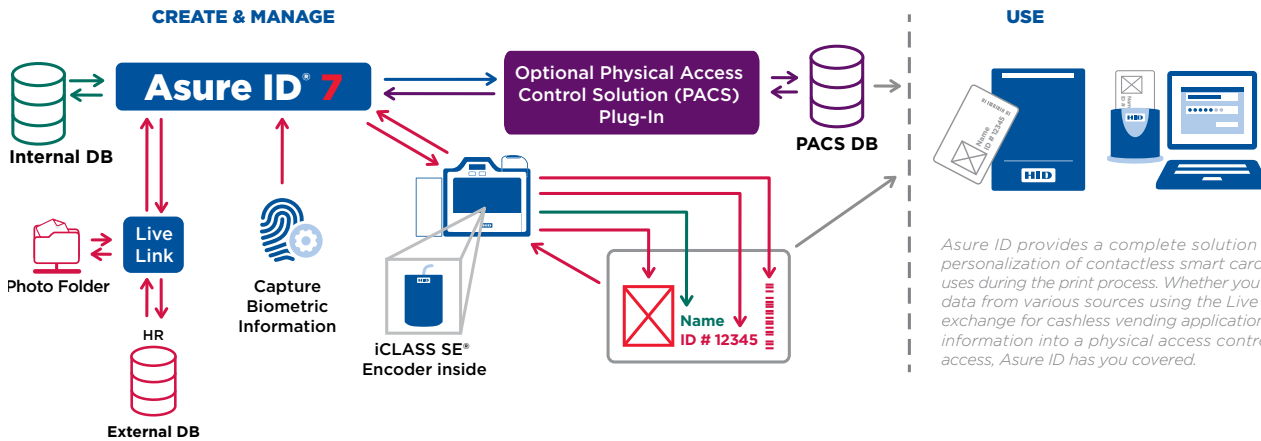
Databases demystified

For many users, the included Asure ID 7 internal database is all they need to store card templates and cardholder information. But with Live Link you can also print card data from external databases such as HR, security or ERP systems. In addition, Live Link enables administrators to link photos directly from a local folder, and create a friendly naming convention enhancing the convenience and flexibility of Asure ID 7. The Live Link Wizard sets up real-time data exchanges with a few mouse clicks.

At print time, Live Link accesses and delivers the data that populates the external data fields on each card.



Asure ID's advanced user configuration module limits or grants access to specified Asure ID modules and templates



Asure ID provides a complete solution to perform inline personalization of contactless smart cards for a variety of uses during the print process. Whether you combine cardholder data from various sources using the Live Link real-time data exchange for cashless vending applications, or register card information into a physical access control solution for door access, Asure ID has you covered.

Search — made quick and easy

In situations where time does matter, the Quick Filter search option provides fast wildcard searching on any field in the active database. The Quick Filter can be set by the administrator to automatically appear when an operator logs in to simplify the data entry experience. The Global Find function extends this convenience over all databases and templates linked and managed with Asure ID 7, providing a powerful tool for enterprise and card service bureau environments.

Data entry streamlined

In addition to simplified card design and database connectivity, Asure ID 7 also provides a fast and efficient way to enroll thousands of cardholder records into the database. Offering many standard views to create records — such as viewing in a table, carousel or as a single record — the configurable data entry center also lets you control how data is sequenced and entered, which greatly improves the speed and throughput of enrolling cardholders.

Easily edit and manage data

In order to manage large databases, DataView can be used to edit and manage data independently from a card design, enabling users to define and switch between different designs by record.

Making everyday work simple

To empower users for daily tasks, Asure ID 7 offers various functions, such as card void, print counter and reports, associating printer with template, loading last template at start-up, saving custom colors, and more.

It does simple, it does complex

Asure ID 7 comes in four editions with increasing levels of sophistication. So whether you're making simple photo IDs or issuing highly secure smart card credentials, Asure ID 7 fits your needs.

Asure ID 7 Solo provides an enhanced user experience for photo ID card design and data entry. Card data fields can be populated from the internal Microsoft Access® database.

Asure ID 7 Express adds features such as compound data fields, batch printing and conditional design and print rules. It can connect to an external Microsoft Access database or else use the import/export wizard to pull record information from Microsoft Excel®. Asure ID 7 can also help increase credential security by limiting access to modules within the software, utilizing roles-based login rights.

Asure ID 7 Enterprise offers expanded database connectivity and networking for enterprise-class card issuance. It works with Microsoft Access and SQL databases and supports ODBC import. The Enterprise edition can work with multiple tables within a single database. This edition also adds in HID interoperability with biometric enrollment using Lumidigm fingerprint sensors.

Asure ID 7 Exchange is designed for the most sophisticated secure credential applications. It adds Oracle®, MySQL®, LDAP and Microsoft Active Directory database support and works with multiple tables within multiple databases. And its iDIRECTOR® encoding and management module improves smart card deployment and development. iDIRECTOR manages

card memory, loads multiple smart card applications, such as time and attendance, and graphically personalizes the card in one seamless process. It's support of the iCLASS SE® open encoder platform enables end-to-end security, control, and flexibility of physical access control solution (PACS) credentials. For example, issuance to a FARGO® card printer with an embedded iCLASS SE encoder allows you to create, encode (read/write), and manage PACS credentials on-site, streamlining your ordering, inventory management, and issuance processes. In addition to supporting iCLASS Seos, iCLASSSE, and HID PROX, iDIRECTOR supports a variety of other card types. To complete the solution, pair the management of the PACS credential with the optional ability to register card data into a PACS solution directly from Asure ID. This can also take the form of a barcode or mag-stripe card element. Asure ID is tightly integrated with over 25 leading access control systems.

HID's Asure ID Exchange Card Issuance Software and its associated Software Development Kit (SDK) provide an intuitive laser configuration module for simplified setup and maintenance of the HDP8500LE Laser Engraver.

The laser configuration module's intuitive interface enables management of data and visual security elements to be printed, encoded and engraved into a credential — all in one unified card template. Asure ID saves users the hassle of setting up two separate card templates in different applications — one enabling laser engraving and one enabling printing/encoding/laminating. With the unified template, time to issuance of secure credentials is greatly decreased.



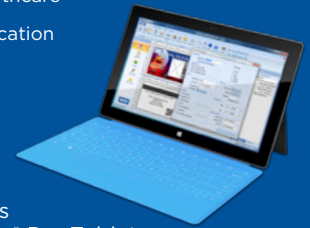
GENERAL	SOLO	EXPRESS	ENTERPRISE	EXCHANGE
Operating System Support: Windows® 7/8/8.1/10 including Windows Pro Tablets	■	■	■	■
Language support: English, French, German, Spanish, Russian, Portuguese (Brazil), Italian, Japanese, Korean, Simplified Chinese, Thai, Indonesian, Arabic, Turkish, & Czech	■	■	■	■
Microsoft® Access® (2000, 2002, & 2003)	Native	Native / Live Link™	Native / Live Link™	Native / Live Link™
Password Log-on with Definable User Privileges and Card Template Access		■	■	■
Microsoft® SQL Server® (2000, 2005, 2008, 2012, & 2014)			Native / Live Link™	Native / Live Link™
Networkable⁶			■	■
MySQL® (version 5)				Live Link™
Oracle® (9i & 11g)				Native / Live Link™
Microsoft Active Directory/LDAP				(Read-Only)
CARD DESIGN				
Dual-sided Template Designs	■	■	■	■
Add Text Field (Variable & Static)	■	■	■	■
Add Photo Fields	■	■	■	■
Import Images (e.g., Logos & Graphics)	■	■	■	■
Add a Linear Barcode	■	■	■	■
Add Magnetic Stripe	■	■	■	■
Fluorescing Panel (F-Panel) Support	■	■	■	■
Various Card Sizes	CR-80 Only	■	■	■
Add Data Fields	8	Unlimited	Unlimited	Unlimited
Add Compound Data Field		■	■	■
Integrated Signature Capture		■	■	■
Add 2D Barcodes (PDF417, QR Code, & Datastripe)		■	■	■
Set Conditional Design and Print Rules		■	■	■
Smart Card Encoding and Management (DIRECTOR)¹				■
Program Access Control Credentials (i.e. iCLASS SE® Encoder Support)				■ ⁷
Add Laser Engraved Text, Data and Photo Fields				■ ²
DATA ENTRY				
Integrated Photo Capture (TWAIN, DirectShow® & WIA) with Auto-Enhance	■	■	■	■
Save and Search Records	200	■ ³	Unlimited	Unlimited
Save Photos to Folder	■	Custom Naming Option	Custom Naming Option	Custom Naming Option
Global Find		■	■	■
Integrated Lumidigm Fingerprint Enrollment			■	■
Batch and Sheet Printing		■	■	■
Reports (Standard & Custom)		■	■	■
Export Reports		■	■	■
Microsoft Excel and Text File Import/Export		■	■	■
ODBC Import/Export		Import	■	■
Live Link (Real-time Data Exchange)⁴		Single DB/Single Table	Single DB/Multi-Table	Multi-DB/Multi-Table
Database View Connectivity			■	■
Educational Import/Export (Student Photo CD)⁵			Optional ⁵	Optional ⁵
Physical Access Control Integration (Register Credential in PACS System)				Optional ⁵
ASURE ID PROTECT PLANS				
Free Updates⁸	■	■	■	■
Annual/Multi-Year Support Packages	Optional	Optional	Optional	Optional

¹ Manage and control card access formats, smart cards and card applications.
² Available when used with FARGO® HDP8500LE.
³ Storage limitations based on Microsoft Access.
⁴ Bi-directional data exchange with third-party databases and applications.

⁵ Additional purchase.
⁶ Asure ID site licenses enable sharing of networked database information on multiple workstations.
⁷ iCLASS® Standard/SE/SR/Seos, MIFARE DESFire® EV1, HID Prox.
⁸ Free updates do not apply to major product releases.

ASURE ID® MEETS THE CARD APPLICATION NEEDS OF:

- Large Corporations
- National ID Programs
- Drivers Licenses
- Government/Military
- State & Local Government
- Healthcare
- Education



Supports Windows® Pro Tablets

HID GLOBAL® IS THE LEADER IN SOLUTIONS FOR THE DELIVERY OF SECURE IDENTITY

Asure ID is just one part of a complete, integrated system for the issuance, management and authentication of secure IDs. Your HID Global dealer can custom design a secure identity system using proven HID components including:

- FARGO® ID Card Printer/Encoders
- Cards, ribbons, films and overlaminates
- ID card production services
- HID contact and contactless card readers, including iCLASS® smart card readers
- Lumidigm Fingerprint Sensors

The suggested minimal system requirements for Asure ID 7 are:

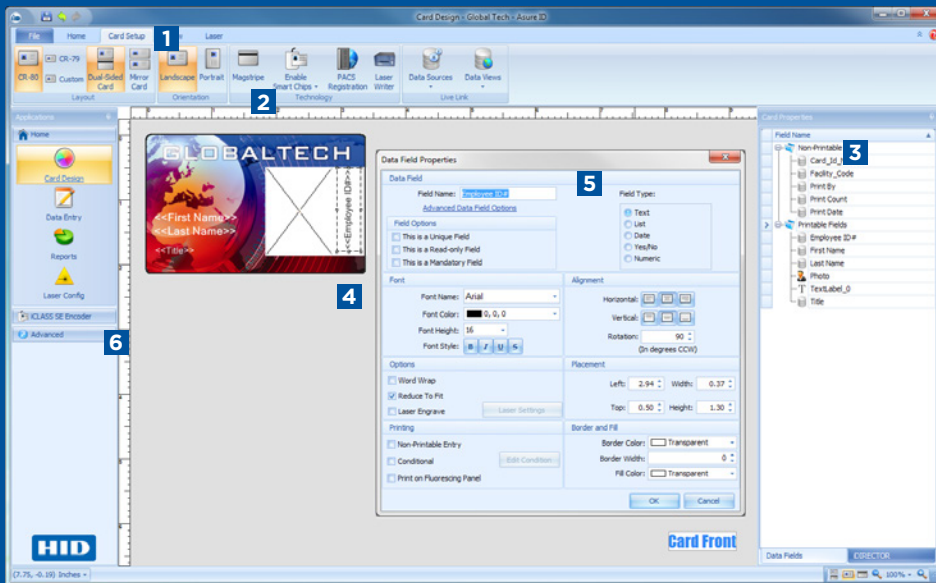
- 1 GHz or faster processor
- 1 GB RAM
- 1 GB available hard disk space

Free trial download is available from:

hidglobal.com/asureid

Asure ID[®] 7

Card Personalization Software



TOOLS AT YOUR FINGERTIPS

HID Global[®] software engineers collaborated with usability experts to give Asure ID 7 a highly productive interface.

- 1** Tabbed navigation separates functions such as card design and data entry into always-present clickable tabs.
- 2** Tool ribbons put frequently used elements (such as data fields, bar codes and photos) into logical groups within easy reach.
- 3** Fly-out palettes simplify the workspace by hiding template attributes until they need to be accessed.
- 4** WYSIWYG display helps ensure accurate card design by showing exactly how a card will print, including data placeholders.
- 5** Consistent properties dialog boxes put object attributes (such as color or position) into a set-then-dismiss floating window.
- 6** Laser configuration module enables simplified set-up and maintenance of laser engraved objects.

The card personalization software you've always wanted

Asure ID 7 is a fresh approach to effectively design and produce personalized IDs.

HID Global's years of knowledge and development experience, combined with using best practices to build new, thoroughly researched user tools, have resulted in Asure ID 7 being built on the Microsoft .NET technology platform for stability and interoperability.

If you're accustomed to previous versions of Asure ID, you're going to love Asure ID 7. Upgrading is simple: Asure ID 7 has built-in tools to import both your templates and database information from previous versions of Asure ID.

North America: +1 512 776 9000 • Toll Free: 1 800 237 7769
Europe, Middle East, Africa: +44 1440 714 850
Asia Pacific: +852 3160 9800 • Latin America: +52 55 5081 1650

© 2017 HID Global Corporation/ASSA ABLOY AB. All rights reserved. HID, HID Global, the HID Blue Brick logo, the Chain Design, Asure ID and FARGO are trademarks or registered trademarks of HID Global or its licensor(s)/supplier(s) in the US and other countries and may not be used without permission. All other trademarks, service marks, and product or service names are trademarks or registered trademarks of their respective owners.

2017-07-16-hid-asureid-card-software-br-en PLT-00646

An ASSA ABLOY Group brand

ASSA ABLOY



hidglobal.com